



## **Supplementary 3 Alcohol and Entertainment Licensing Sub-Committee (B)**

**Tuesday 6 September 2016 at 7.00 pm**  
Conference Hall - Brent Civic Centre, Engineers Way,  
Wembley, HA9 0FJ

### **Membership:**

#### **Members**

Councillors:

Allie (Chair)  
Long (alternate for Daly)  
Kansagra

#### **Substitute Members**

Councillors:

Eniola, Harrison, Long, Mahmood  
and Ms Shaw

**For further information contact:** Joe Kwateng, Democratic Services Officer  
(020) 8937 1354; [joe.kwateng@brent.gov.uk](mailto:joe.kwateng@brent.gov.uk)

For electronic copies of minutes, reports and agendas, and to be alerted when the minutes of this meeting have been published visit:  
**[democracy.brent.gov.uk](http://democracy.brent.gov.uk)**

**The press and public are welcome to attend this meeting**

# Agenda

Introductions, if appropriate.

Apologies for absence and clarification of alternate members

Item	Page
<b>2 Application by Sudbury Primary School Ltd for a new premises licence to provide regulated entertainment, the supply of alcohol and remain open from 08:00hrs to 00:00hrs Mon-Thurs, 03:00hrs Friday &amp; Saturday and 02:00hrs Sunday and provision of late night refreshment from 23:00hrs to 00:00hrs Mon-Thurs, 03:00hrs Friday &amp; Saturday and 02:00hrs Sunday at the premises known as Sudbury Primary School Watford Road Wembley HA0 3EY, pursuant to the Licensing Act 2003.</b>	1 - 16

## **Conduct of the Hearing:**

The hearing shall proceed as follows:

- General introduction by the Regulatory Services Manager
- Case for the Responsible Authority – Police/Regulatory Services
- Questioning of the Responsible Authority by Applicant and Members
- Representations by interested parties (if any)
- Case for the Applicant
- Questioning of the Applicant by the Responsible Authority and Members
- Summing up by the Responsible Authority
- Summing up by the Applicant

## **Members' Deliberation**

The Chair will then ask the representatives of the Responsible Authority and the Applicant to leave the meeting room whilst the panel goes into close session to deliberate the application. The applicant and the representatives of the responsible authority will be recalled to the meeting room when the Sub-Committee has made its decision. The decision will be confirmed in writing to the applicant within 7 days



Please remember to switch your mobile phone to silent during the meeting.

- The meeting room is accessible by lift and seats will be provided for members of the public.

4 Sept 2016-09-04

Sudbury Primary School Alcohol & Entertainment Licence objection

Speech for hearing

I have made a statement of objection.

Today under the public nuisance heading I make the case against the proposal as follows.

This challenges Brent's Licence Office's report item 4 which state "Vale farm car park objective met".

In the school's Sudbury Hall brochure the maximum occupancy stated is 900 people. That implies 450 cars. The drivers will drop off and park where there is space.

Sudbury Town Residents Association achieved Neighbourhood Forum status in December 2012. The Neighbourhood Plan was submitted in July 2015 with referendum on 10 Sept 2015 with a 94% majority is adopted by Brent Council.

In that Neighbourhood Plan Policy VF1: Vale Farm policy is to "support development that strengthens Vale Farm as a regional centre for sports excellence" & "change of use & development other than for uses which support recreational, sporting & amenity use will not be permitted at Vale Farm". In addition by allocating use by the school to park cars denies future improvement to Vale Farm Sport Centre.

See illustrations. #1 shows the locations. #2 shows the walking distance is 570 metres.



Illustration #1 locations



Illustration #2 Car Park Distance 570 metres

450 cars at 5 metre spacing in a queue is 2.25km long

100 cars at 5 metre spacing is 500 metres long.

Cars could drop of at the entrance in Perrin Road, then drive around Elms Lane, down Homefield Road, turn into Watford Road, then turn right into Vale Farm. That would occur on arrival & leaving. This scenario is a public nuisance.

The decision makers on this matter have a duty of care to society. The proposal is a public nuisance & denies people in the community access to participation in sport. Sport participation in the community overrides drinking & entertainment.

This is a public nuisance.

Therefore the objection is not met.

---



### Wildlife Area

In the school's Sudbury Hall brochure it states "Our wildlife garden including a pond is perfect for photographs enabling you to capture unique and wonderful moments."

In the Licence Officers report it states "The Playground must not be used by patrons. In the event of summer fairs, the licence holder must ensure that other appropriate licenses are in place. Objectives met (crime and disorder, public nuisance, public safety, protection of children from harm)."

I made the case to protect the wildlife area in my objection statement. The matter has not been addressed. Therefore all the factors remain & the Alcohol & Entertainment application must be refused.

See illustration #3 showing the Wildlife Area & proximity of back gardens



Illustration #3 Wildlife area & proximity to back gardens

End.

**This page is intentionally left blank**

## Sudbury Hall Premises licence application

1



2





3



4





5



6

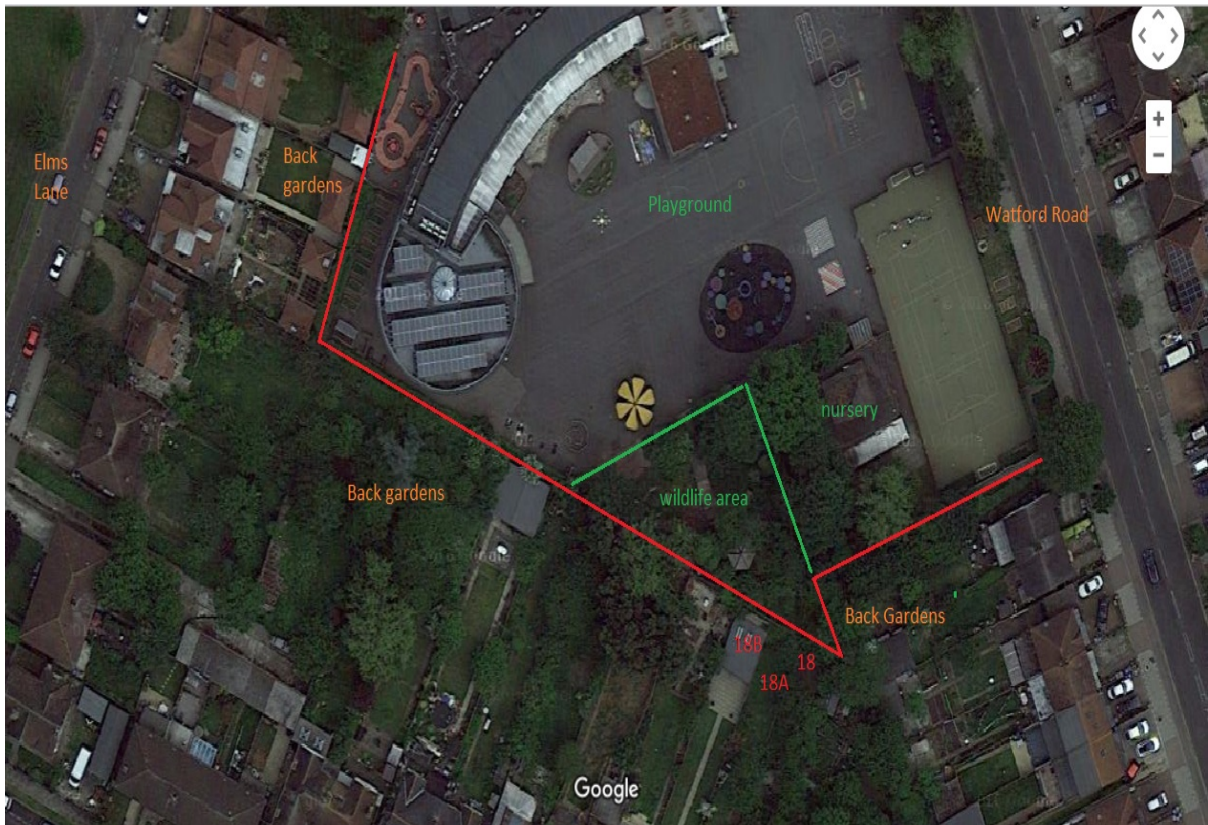




7



8





**This page is intentionally left blank**





**This page is intentionally left blank**





**This page is intentionally left blank**



**This page is intentionally left blank**